

Vertical balers

B-series B20



LARGE SCALE COMPRESSION

The B20 is a highly flexible machine and can be used in many different situations eg. larger retail shops, stores and different industries.

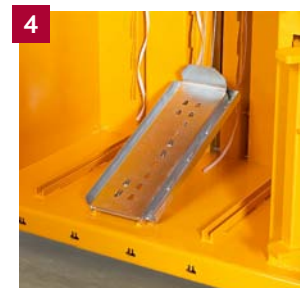
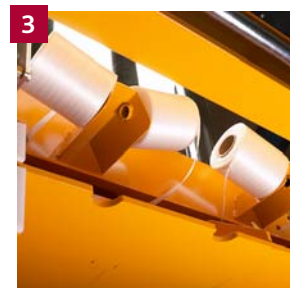
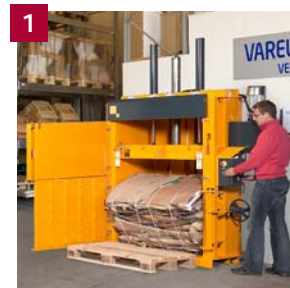
This baler has a wide filling opening for handling larger boxes, and the chamber is provided with rows of barbs, which keep the waste material down, even very expandable materials.

The B20 is easy to operate and the traditional construction ensures low maintenance costs.



Technical specifications

Press force (t)	20
Power supply	3x230/400V 50Hz 25/16A
Motor (kW)	4.0
Noise level (dB)	62-64
Cycle time (sec)	36
Dimensions LxWxH (mm)	1760 x 1025 x 2770
Weight (kg)	1240
Filling opening WxH (mm)	1200 x 550
Filling height (mm)	965
Chamber height (mm)	1410
Stroke (mm)	750
Bale size WxDxH (mm)	1200 x 800 x 850
Bale weight cardboard (kg)	200-250
Bale weight plastic (kg)	250-300



1 Compact your waste and eject the finished bale **2** Remove and store the bale until collection. **3** Strap rolls are easy to replace in front of the machine. **4** An efficient and silent ejecting system ensures easy handling of the compressed bale.

- **Easy to replace strap rolls**
They are placed in front
- **Automatic ejection**
Two-hand operation ejects the bale
- **Large filling opening**
Advantage when handling larger boxes